



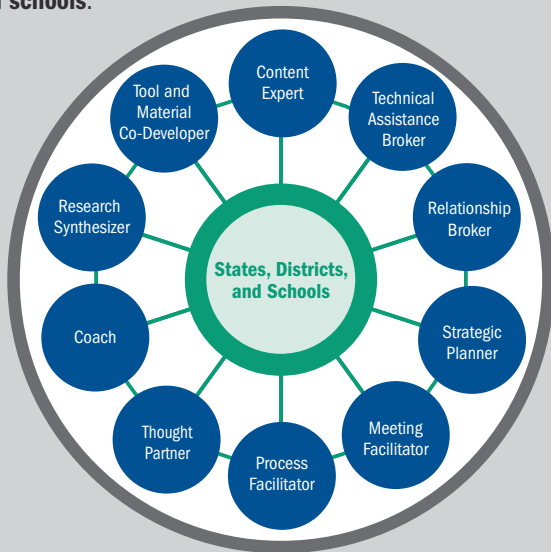
MIDWEST Comprehensive Center

at American Institutes for Research ■

The **Midwest Comprehensive Center (MWCC)**, funded through a U.S. Department of Education grant, provides technical assistance to the state education agencies of Illinois, Iowa, Minnesota, and Wisconsin. MWCC services focus on building capacity and providing support to state education agencies, districts, and schools to improve student outcomes. MWCC provides support across a number of areas, including school improvement, educator development and effectiveness, college and career readiness, and standards and assessments. MWCC brings experience in engaging stakeholders in policy design and implementation, providing research and content expertise to inform initiatives, and planning for high-quality implementation and sustainability.

Team Approach

MWCC partners with **state education agencies, districts, and schools.**



MWCC Services



Stakeholder Engagement

MWCC provides expertise in bringing together internal and external stakeholders to give input on the design and implementation of policies. MWCC has extensive experience with facilitating groups to achieve desired outcomes and synthesizing stakeholder input into clear and actionable recommendations. MWCC has helped state education agencies convene task forces, advisory groups, and cross-division teams in a number of content areas.



Research and Content Expertise

MWCC offers expertise in identifying and compiling relevant data and information, as well as in translating complex information into accessible resources. MWCC's extensive experience with applying evidence and research to inform decision making and deep content knowledge allow MWCC to provide strategic guidance in the development of initiatives.



Implementation and Sustainability

MWCC supports initiative or policy implementation through the development of a course of action. MWCC has extensive experience with leading processes to help state education agencies, districts, and schools achieve specific tasks and outcomes outlined in the course of action, assess progress, and document lessons learned to inform sustainability. MWCC provides support in developing guidance, trainings, tools, and other resources that are key to the successful implementation and sustainability of initiatives.

Technical Assistance Model

Working with state education agencies, districts, and schools means long-term, sustainable results that solve education problems.



Contact Information



Alicia Garcia
Director
312.588.7338
agarcia@air.org



Lisa Shimmel
Deputy Director
312.283.2301
lshimmel@air.org



Jenni Fipaza
Project Manager
312.283.2403
jfipaza@air.org

Find more information at <http://midwest-cc.org/>



Follow on Twitter @MidwestCompC

